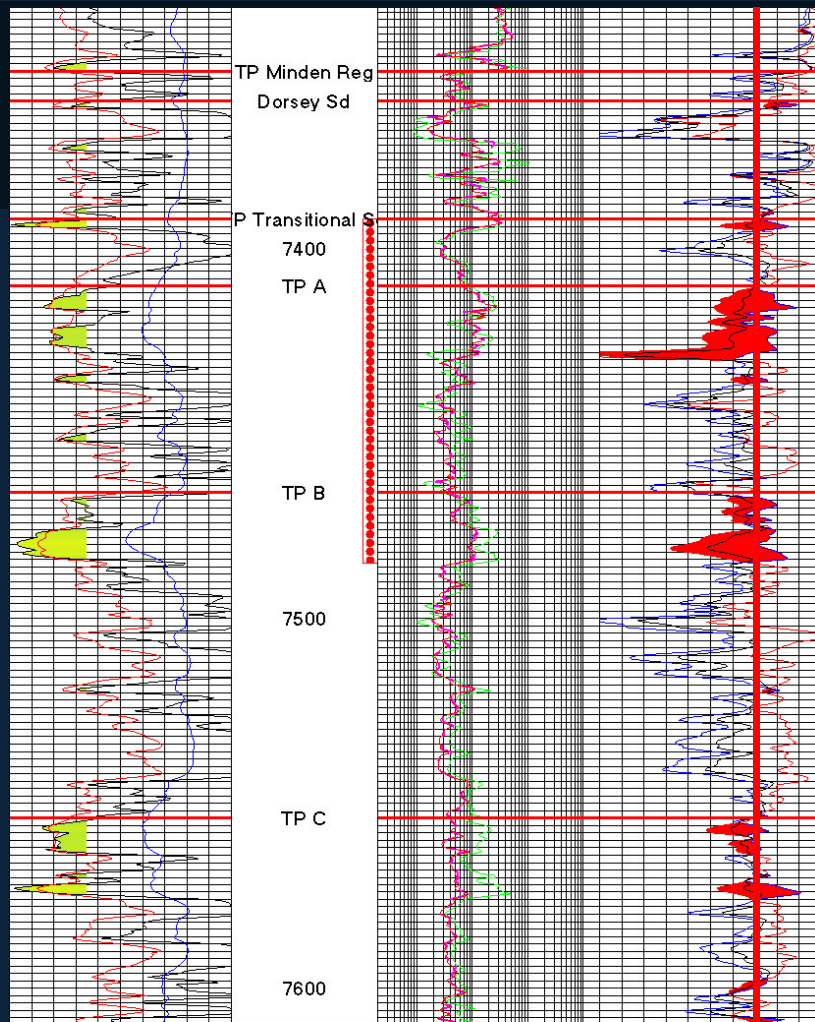


Travis Peak Type Log

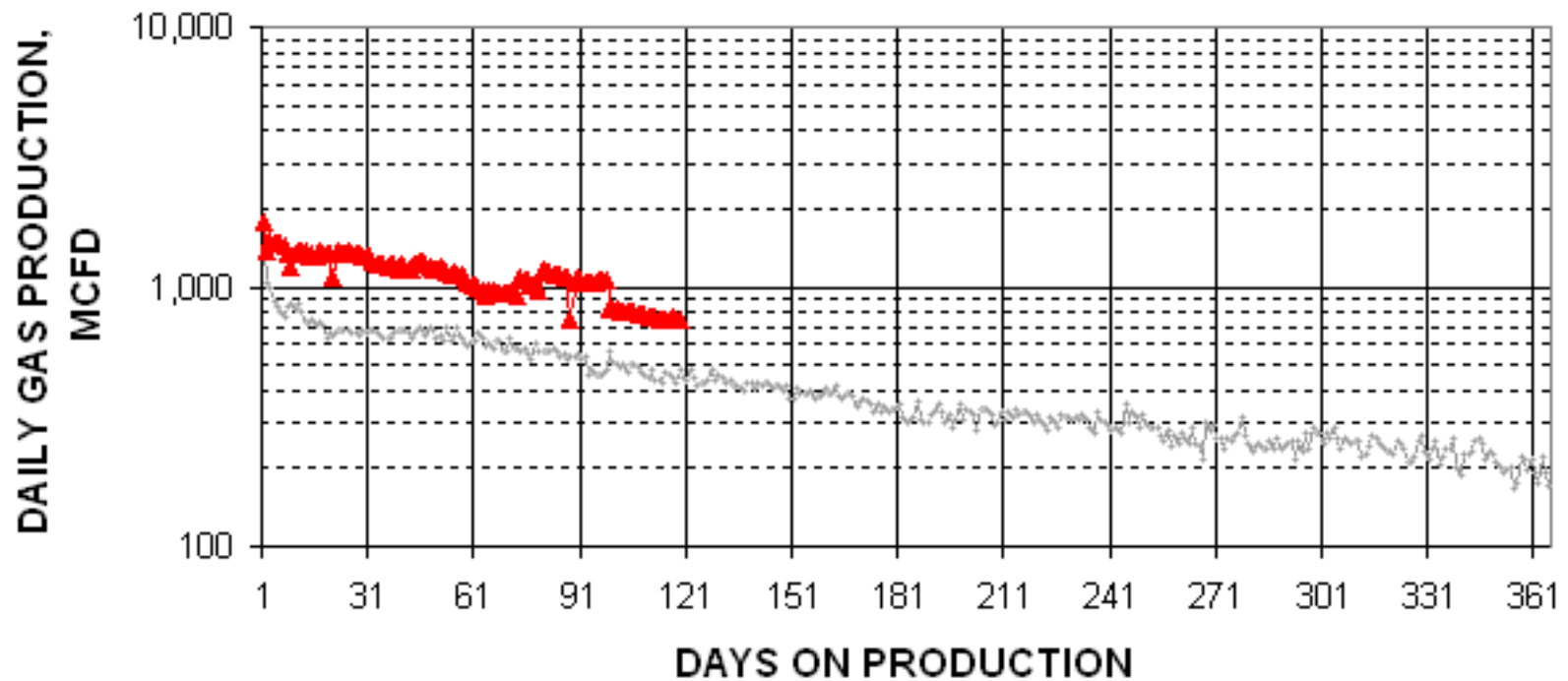


Correlation			Depth			Resistivity			Porosity		
GR			MD			ResD(AHO90)			PHIA 9%		
0.000	GAPI	200	0.2	OHMM	20000.3	0.2	OHMM	20000.3	PHID(DPHZ)	0	0
SP			ResM(AHO30)			PHID(DPHZ)					
-160	MV	40	0.2	OHMM	20000.3	0.2	OHMM	20000.3	CFCF	0	0
Vshl			ResS(RXOZ)			PHIN(NPHI)					
0.000		1.000	0.2	OHMM	20000.3	0.2	OHMM	20000.3	DECP	0	0
<GR Yellow Green>			Core_Por(N/A)			0.3			0		
			Red								

Zero Time Plot Old vs. New Fracs

GMT ENERGY, INC. (MINDEN COTTON VALLEY FIELD)

(Dates normalized to date of peak gas rate)

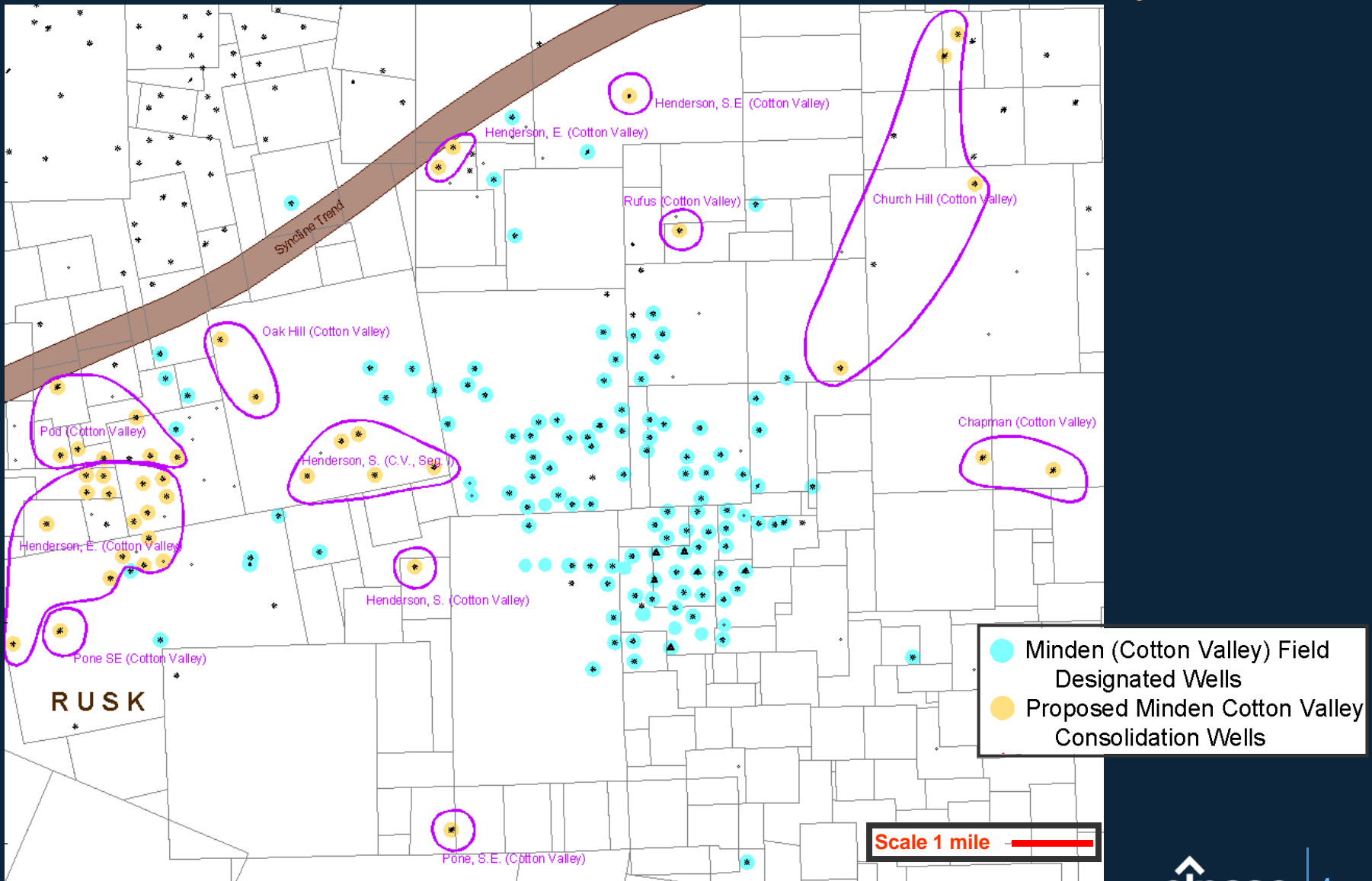


— Average Old GMT Frac Well ▲ Average New GMT Frac Well

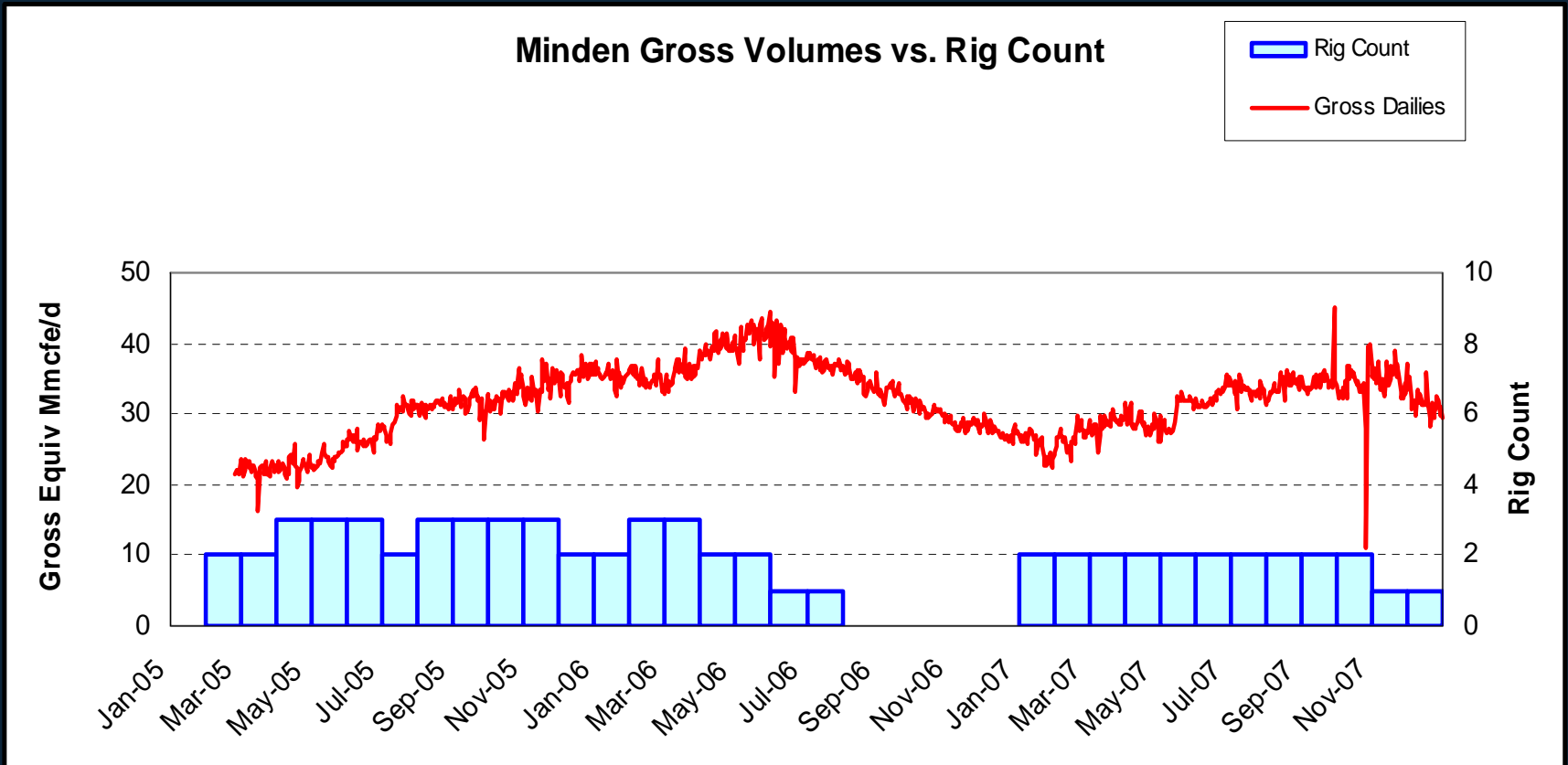
Minden Field Challenges

- **A. Regulatory issues**
- **B. Keeping ahead of 3 Rigs**
- **C. Unexpected loss of 2 rigs**
- **D. Increase in development costs**

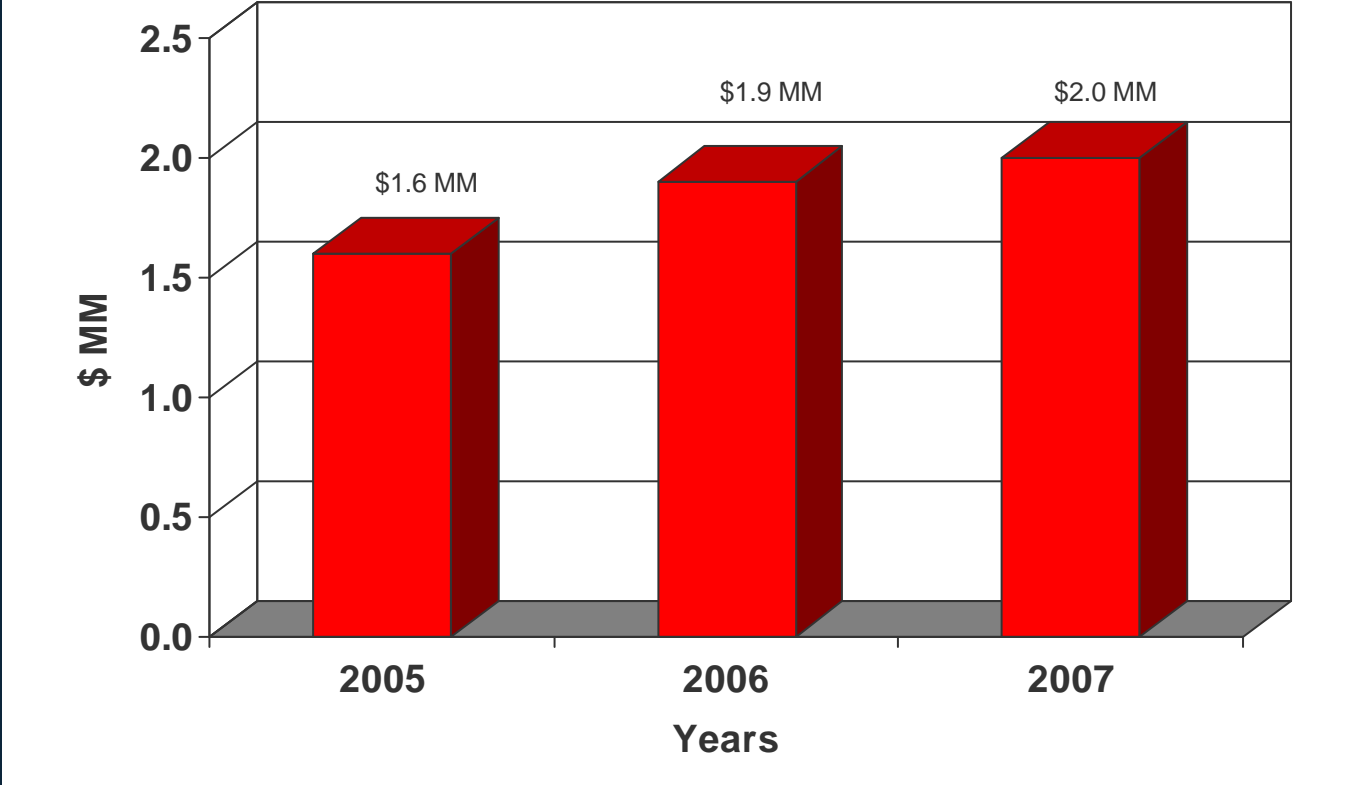
Cotton Valley Fields



Minden Gross Volumes vs. Rig Count



Historic AFE Cost

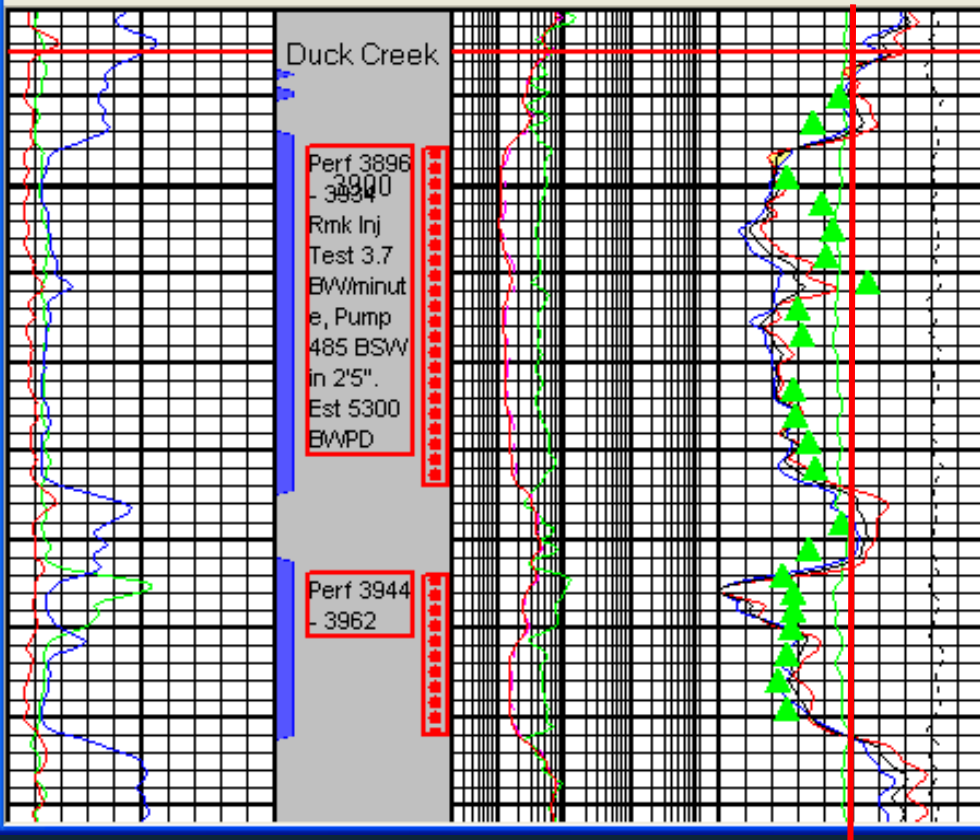


■ AFE Cost

Duck Creek Log Section

42401337010000 - SwPorGLG.prt - VIPER SWD #1D

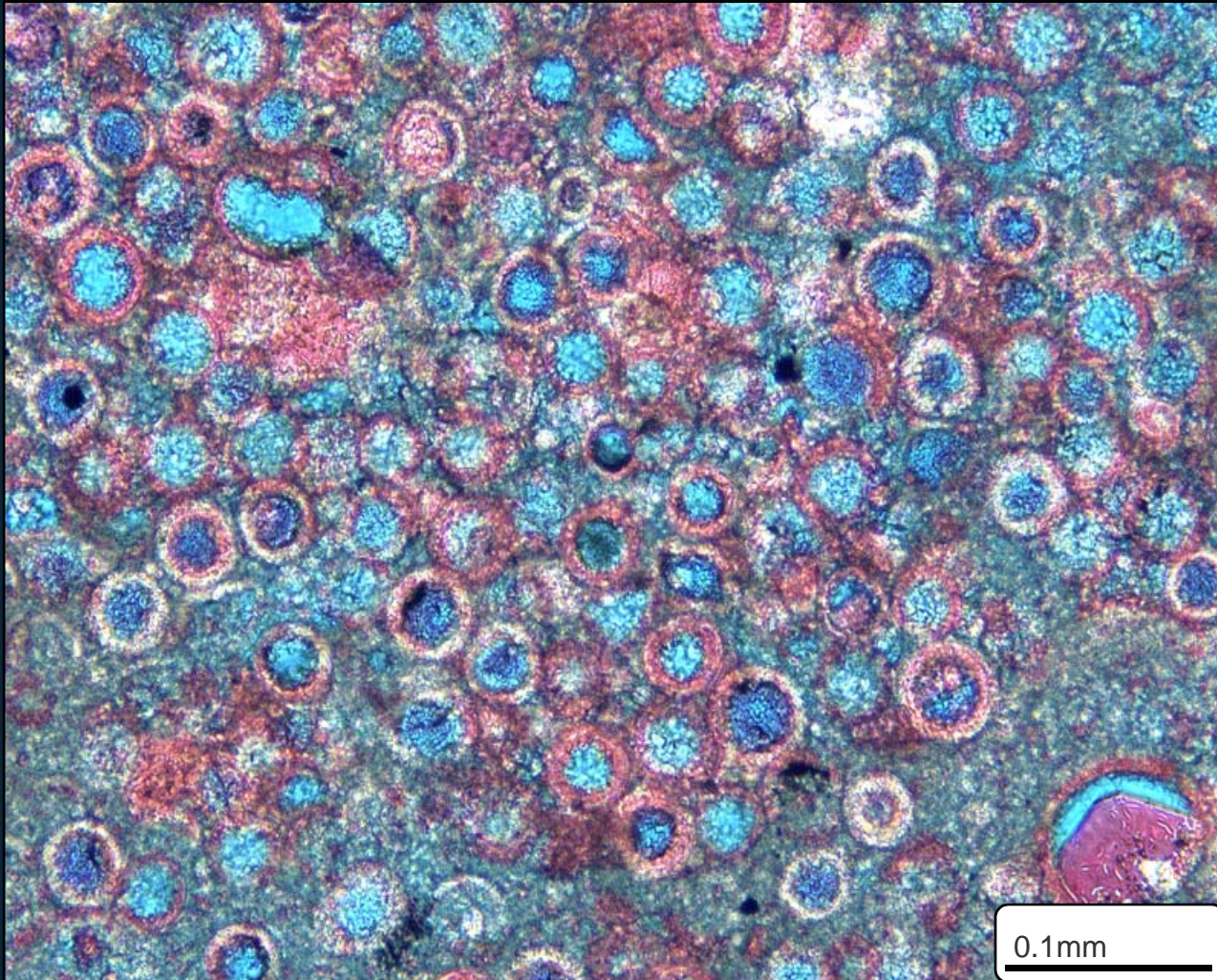
Correlation	Depth	Resistivity	Porosity
Core_Vshl(N/A)	MD	ResD(HT90)	Core_Por
0.000		0.2 OHMM 2000	0.3 V/V
GR	Pay	ResM(HO30)	PHIA
0.000 GAPI 200		0.2 OHMM 2000	0.3
SP	PAY	ResS(DFL)	PHID(DPHI)
-160 MV 40		0.2 OHMM 2000	0.3 DECP
ROP(N/A)	Por		PHIN(NPHI)
0			0.3 DECP



DUCK CREEK SWDW ZONE
 62' Porosity > 15%
 Average Porosity 22%
 Perm 1.3 to 12 MD

15%

Duck Creek Thin Section

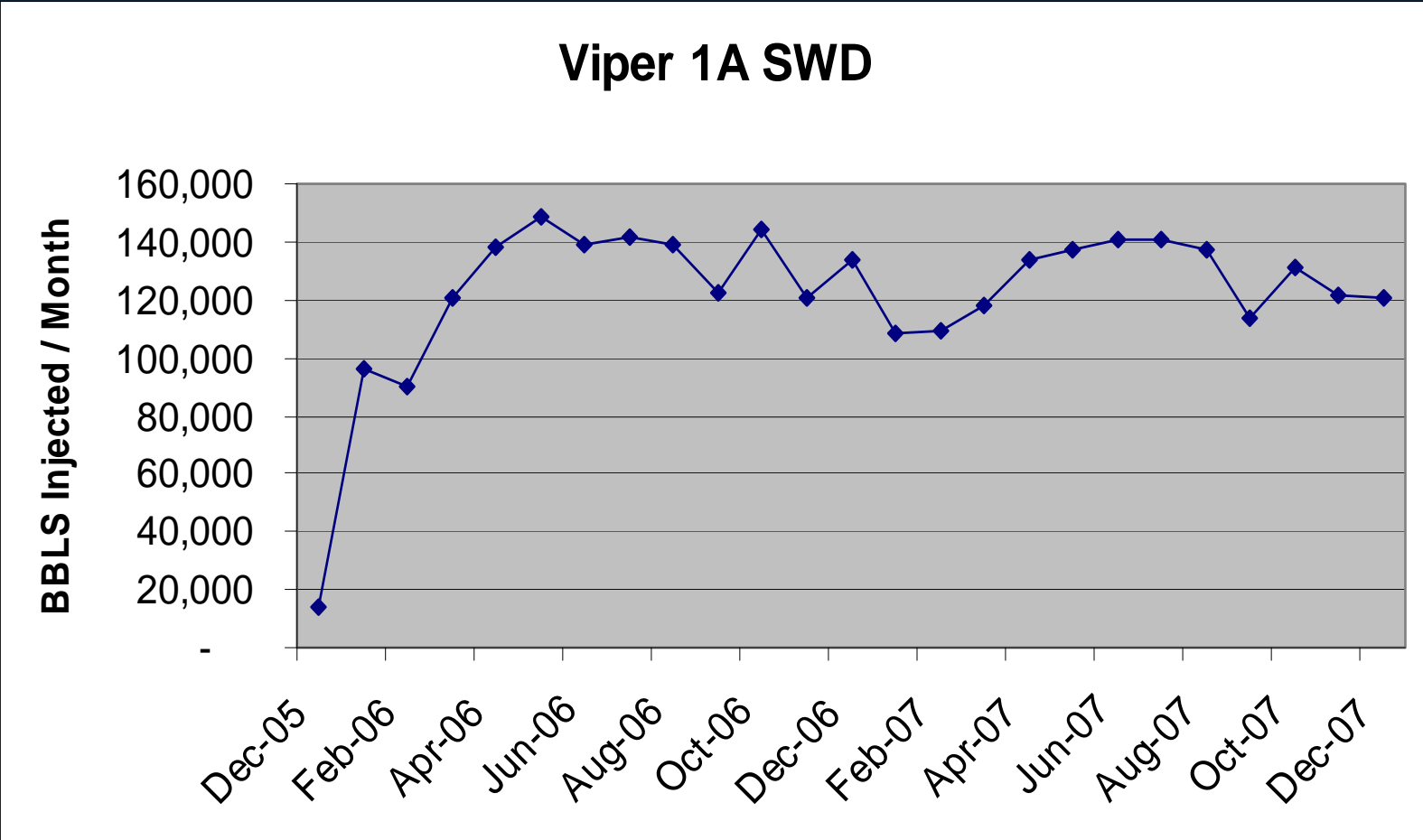


Depth 3946

Porosity 21.5%
Perm 9 MD

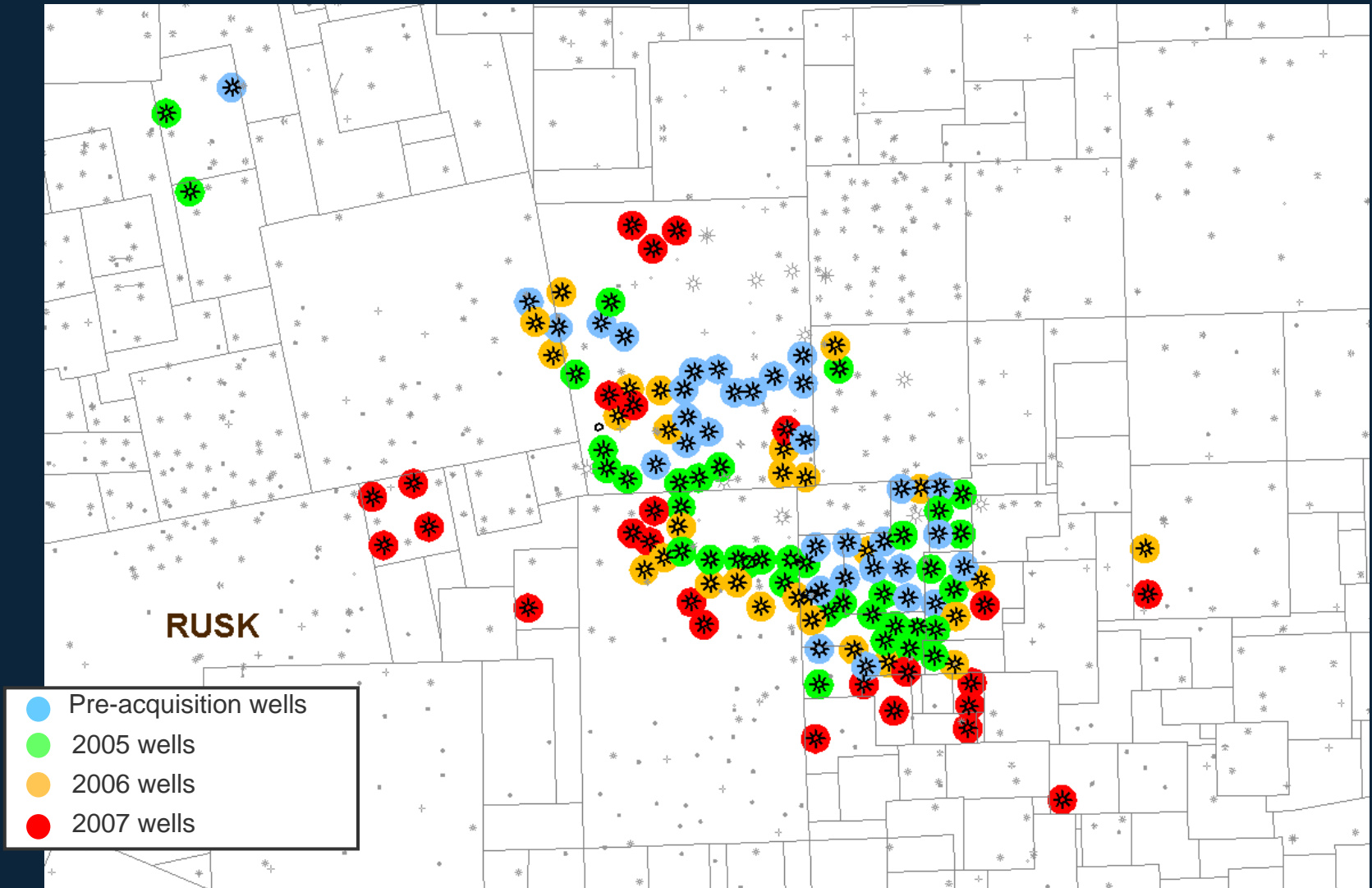
0.1mm

SWDW Monthly Injection Rate



As of December 2007 Disposed of 3.2 MMBSW
Estimated saving @ .35/bbl = \$ 1,137,000

El Paso Activity Map



Acknowledgments

Lucia Cantu

Jason Williams

Lew Duff

Jay Dickman

Steve Biancardi

Jerry Foster

Scott Palmer

Ken Whetstone